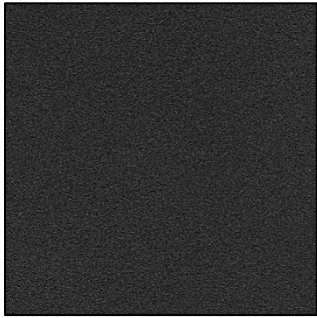


STANDARD POWDER-COAT SELECTIONS (Super Durable, UV Resistant)

Appearance subject to monitor / printer settings. Physical samples available upon request.



Black Finetex



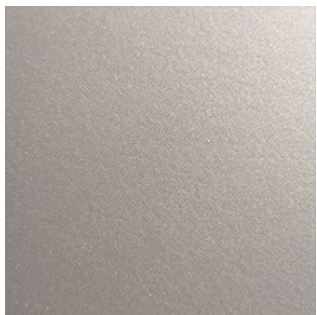
Corten Finetex



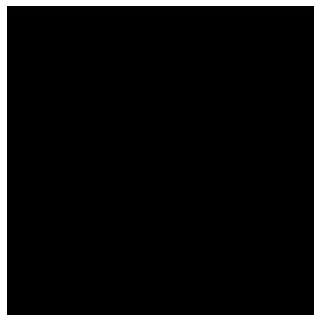
Roman Gold Finetex



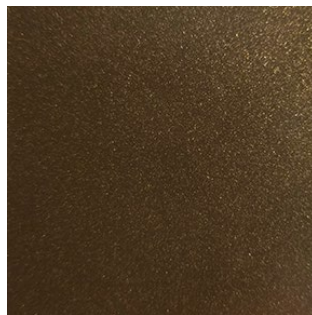
Shale Finetex



Silver Titanium



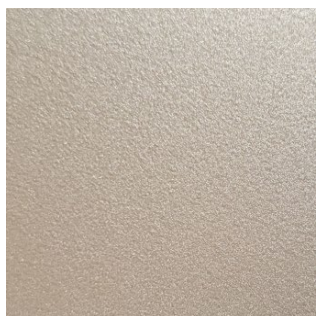
Midnight Black



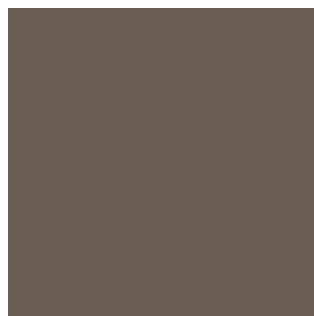
Bronze



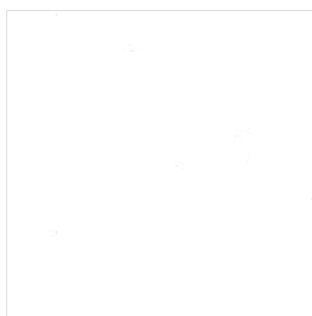
Gun Metal



Champagne



Dark Taupe Satin



White Satin



RAL Colors

Notes:

Color-matching available. additional costs may apply.

Color-matched powder-coating finishes may vary in gloss and tone compared to liquid paint finishes.

Standards colors subject to change over time - please check current at <https://www.sturdesign.com/finishes>