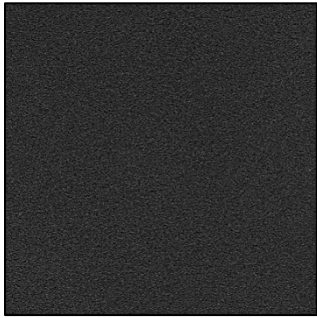




STANDARD POWDER-COAT SELECTIONS (Super Durable, UV Resistant)

Appearance subject to monitor / printer settings. Physical samples available upon request.



Black Finetex (Low Sheen)



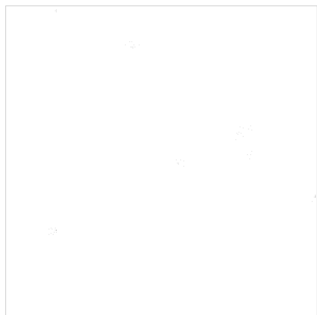
Corten Finetex (Low Sheen)



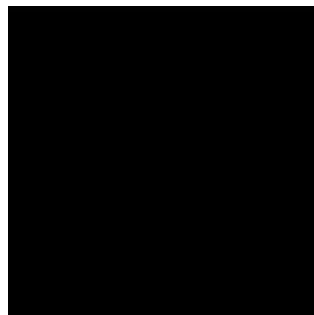
Silver Titanium



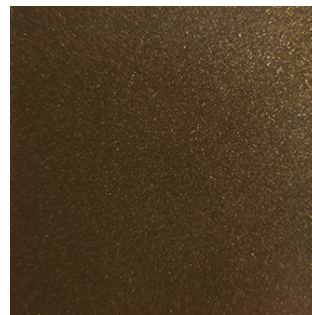
Gun Metal



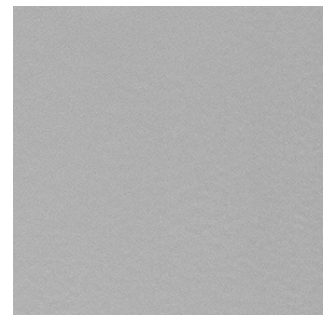
White Satin



Midnight Black



Bronze



Brilliant Silver



Dark Taupe Satin



RAL Colors

We offer many RAL colors, please contact us for current selections.

We also offer color-matching.

Notes:

Additional costs may apply. *Color-matched powder-coating finishes may vary in gloss and tone compared to liquid paint finishes.*

Standards colors subject to change over time - please check current at <https://www.sturdesign.com/finishes>